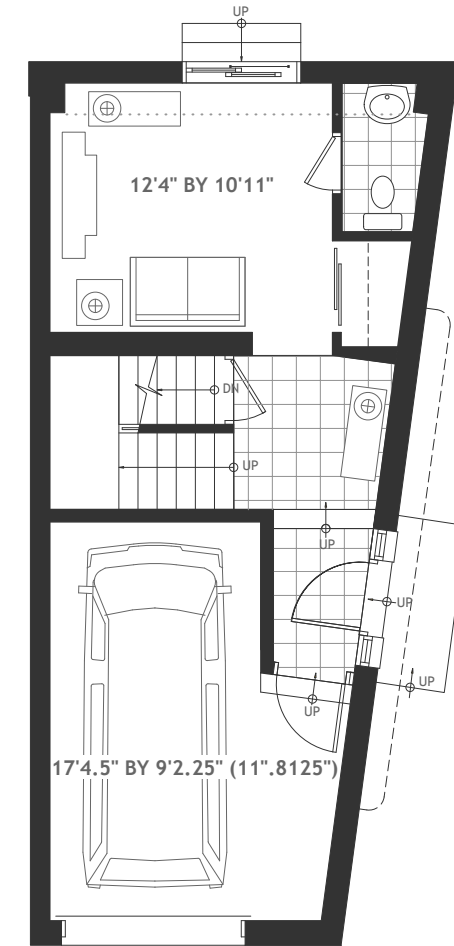
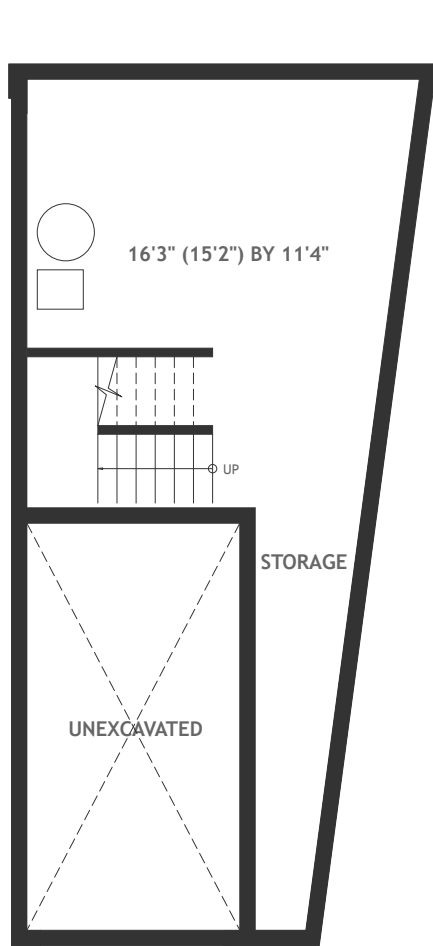


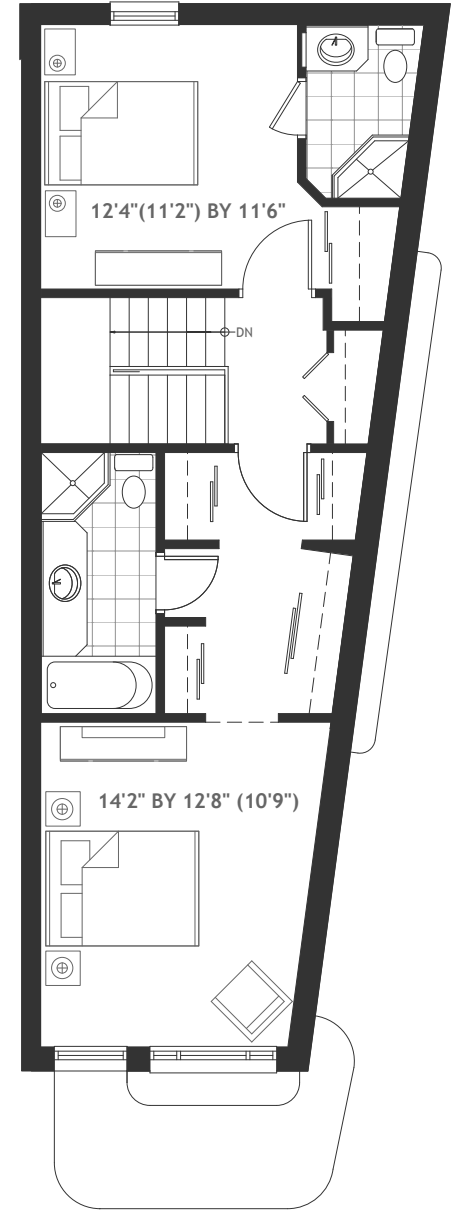
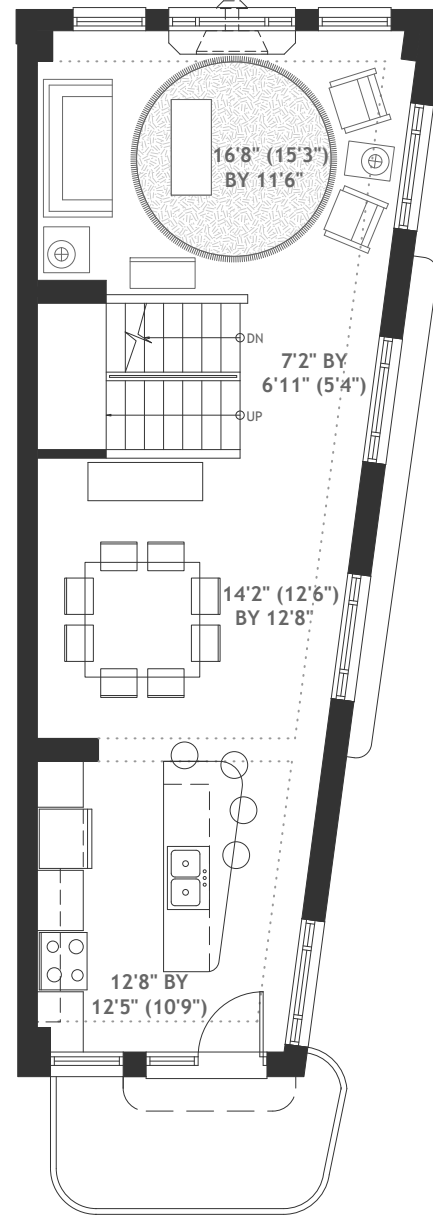
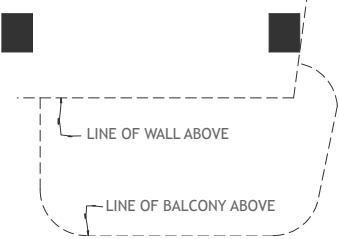
# 55 EVELYN AVE

Contemporary townhouses in downtown Ottawa

**SHERBROOKE**  
URBAN DEVELOPMENTS LTD.



17' 4 1/2" by 9' 2 1/4" ( 11' 13/16")



E&OE All dimensions are approximate.  
Plans and specifications are subject to site conditions and change without notice

**EVELYN**  
ON THE  
**MAIN**

**BASEMENT**

**GROUND FLOOR**

**SECOND FLOOR**

**THIRD FLOOR**